

## Hotels close to the hospital:

Artis Hotel  
(Rennweg 51, A-1030, Vienna)

La Scala  
(Schützengasse 19, A-1030, Vienna)

Belvedere Apartments  
(Fasangasse 18/10, A-1030, Vienna)

The Imperial Riding School Vienna  
"A Renaissance Hotel"  
(Ungargasse 60 A-1030, Vienna)

## Organisation:

Dr. Kerstin Steindl-Kuscher, PhD  
Ms. Nicole Hlawatsch, Secretary

Juchgasse 25  
1030 Vienna, Austria  
Tel: +43-1-71165-4607, -4637  
Fax: +43-1-71165-4609  
Email: [kerstin.steindl@wienkav.at](mailto:kerstin.steindl@wienkav.at)  
Web: <http://retina.lbg.ac.at>

# 3<sup>rd</sup> Retina Science Day

## 19th February, 2011

### Vienna, Austria

## 09.00 – 16.00

## Topics:

### Intraocular Tumors

### Retinal Detachment

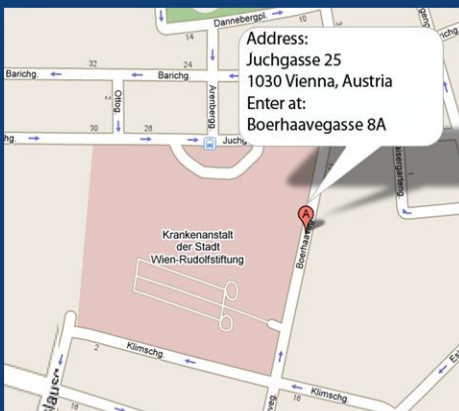
## Accessibility:

Subway line U3 (Station Rochusmarkt)

Tramway 71 (Station Rennweg)

Bus 77A (Bus stop Juchgasse)

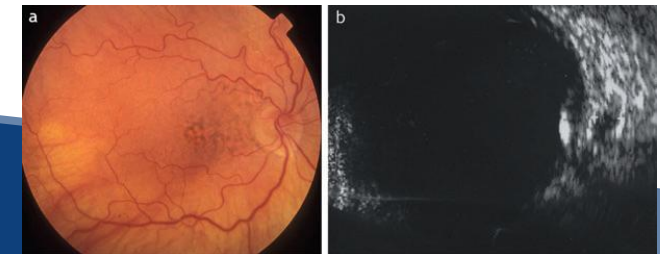
Please enter the building around the  
corner at Boerhaavegasse 8A



Free registration via email to:

[kerstin.steindl@wienkav.at](mailto:kerstin.steindl@wienkav.at)

CME: The conference will be CME certified



Intraocular Lymphoma (Coupland et al., 2008)

Hosted by

Prim. Univ. Prof. Dr. Susanne Binder

Department of Ophthalmology  
Rudolf Foundation Clinic, Teaching Hospital of  
the Medical University of Vienna  
Ludwig Boltzmann Institute for Retinology  
and Biomicroscopic Laser Surgery  
Vienna, Austria

## 3<sup>rd</sup> Retina Science Day

19<sup>th</sup> February 2011, 09.00 – 16.00

Department of Ophthalmology  
Rudolf Foundation Clinic, Teaching Hospital of  
the Medical University of Vienna  
Ludwig Boltzmann Institute for Retinology  
and Biomicroscopic Laser Surgery  
Vienna, Austria

### Main Topics:

**Intraocular Tumors**

**Retinal Detachment**

### Confirmed speakers:

**Prof. Susanne Binder, MD**  
Department of Ophthalmology  
Rudolf Foundation Clinic  
LBI for Retinology and  
Biomicroscopic Laser Surgery  
Vienna, Austria

**Prof. Sarah Coupland, PhD**  
Department of Cellular and Molecular  
Pathology  
Royal Liverpool Hospital, UK

**Dr. Christiane I. Falkner-Radler, MD**  
Department of Ophthalmology  
Rudolf Foundation Clinic  
Vienna, Austria

**Prof. Heinrich Heimann, MD**  
St. Pauls Eye Unit  
Royal Liverpool Hospital  
Liverpool, UK

**Prof. Martine Jager, MD**  
Department of Ophthalmology  
University Leiden, NL

**Prof. Gerald Langmann, MD**  
Department of Ophthalmology  
Medical University Graz, Austria

**Prof. Arun Singh, MD**  
Department of Ophthalmic Oncology  
Cole Eye Institute  
Cleveland Clinic  
Cleveland, OH, USA

**Prof. Andreas Wedrich, MD**  
Department of Ophthalmology  
Medical University Graz, Austria

**Dr. Barbara Wimpissinger MD**  
Department of Ophthalmology  
Rudolf Foundation Clinic  
Vienna, Austria

## Topics

**Differential Diagnosis of Intraocular  
Mass**

**Inflammation and Uveal Melanoma**

**Prognostic Parameters in Uveal  
Melanoma**

**Intraocular Biopsies – the  
Differential Diagnoses and  
Specimen Work Ups**

**The Different Types of Intraocular  
Lymphomas with Special Emphasis  
on Vitreoretinal Lymphomas**

**Von-Hippel-Lindau Syndrome  
– an Update**

**Retinal Detachment: Current  
Approach of PVR**

**The Surgeon's Influence on Retinal  
Detachment – Surgery Outcome**

**Entry-Site Related Retinal  
Detachments**

**Retinal Detachment Surgery  
– Change of Concepts**

**Management of Primary Retinal  
Detachment – Buckle vs.  
Vitrectomy**

**Alcon**<sup>®</sup>  
Sponsored by Alcon